

# 9/16" BORE BRASS HEAVY DUTY CYLINDER



Consult factory for hydraulic applications

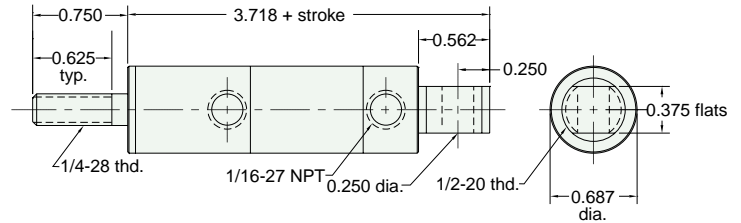
Note: Maximum recommended hydraulic working pressure for heavy duty cylinders is 1000 psig.

## H9C-□D

**Mount:** Clevis      **Available Stroke Lengths:** 1", 2", 3", 4", 5", 6"  
**Type:** Double Acting

**To order:** Indicate stroke in box □

Add **-N** to the end of the part number for a non-threaded rod



Nuts included, but not shown on drawing

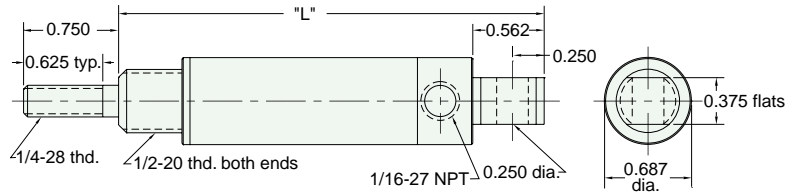
## H9U-□S

**Mount:** Universal  
**Type:** Single Acting Spring Return

Stroke Length "L"	1"	2"	3"
	4.375"	6.031"	7.687"

**To order:** Indicate stroke in box □

Add **-N** to the end of the part number for a non-threaded rod



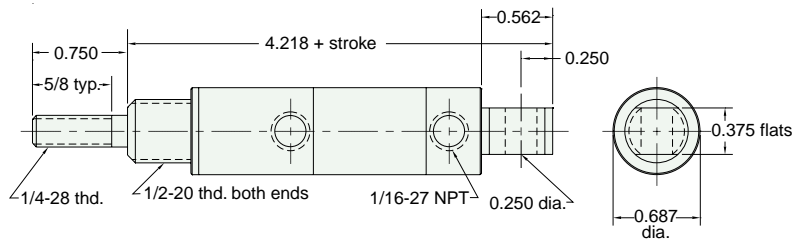
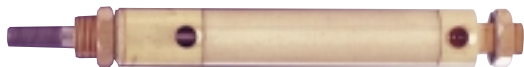
Nuts included, but not shown on drawing

## H9U-□D

**Mount:** Universal      **Available Stroke Lengths:** 1", 2", 3", 4", 5", 6"  
**Type:** Double Acting

**To order:** Indicate stroke in box □

Add **-N** to the end of the part number for a non-threaded rod



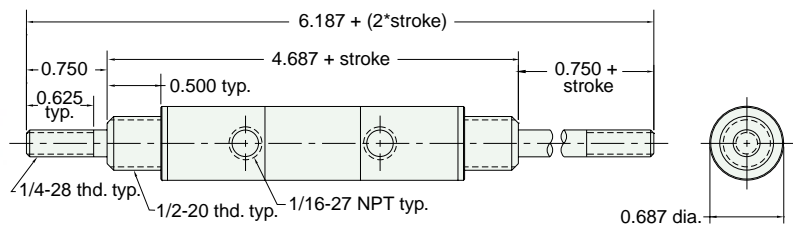
Nuts included, but not shown on drawing

## H9D-□D

**Mount:** Stud      **Available Stroke Lengths:** 1", 2", 3", 4", 5", 6"  
**Type:** Double Acting Double Rod

**To order:** Indicate stroke in box □

Add **-N** to the end of the part number for a non-threaded rod



Nuts included, but not shown on drawing